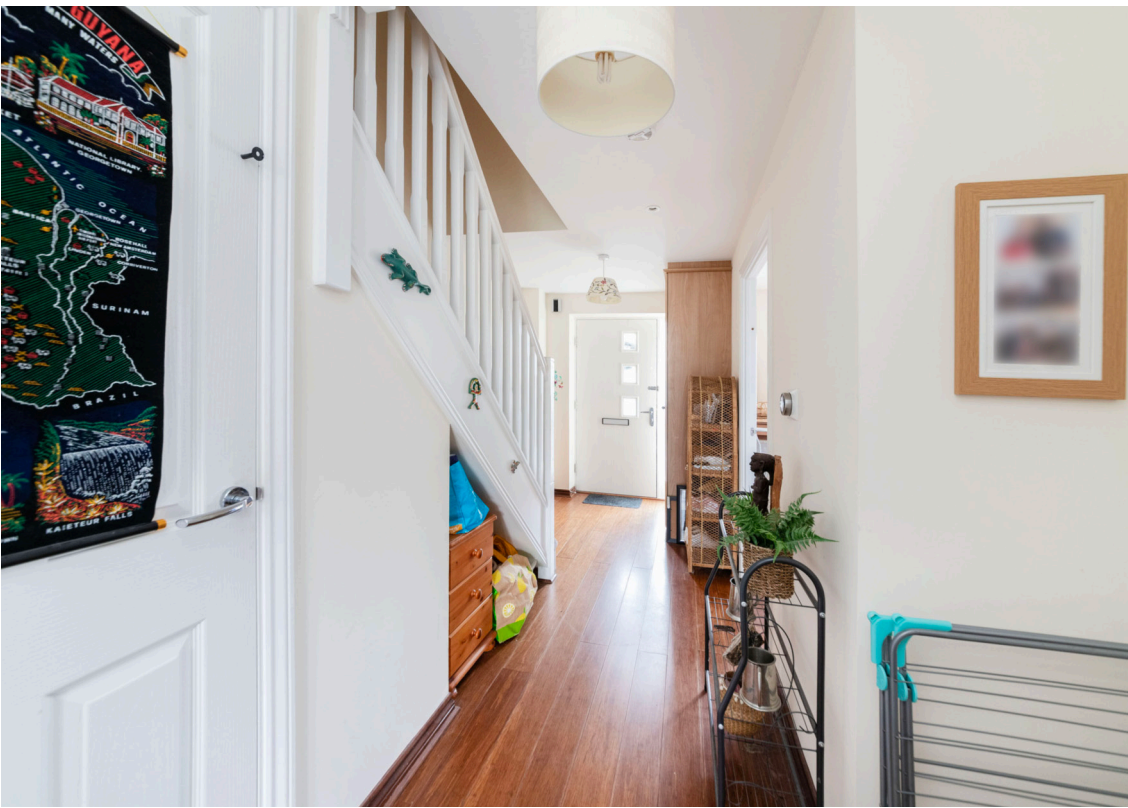




Blackthorn Road, Didcot, OX11 6AY

**Hodsons**  
...your move, our passion



## Blackthorn Road

---

Hodsons are delighted to bring to the market this well presented three bedroom detached house on Great Western Park. The property consists of a welcoming entrance hall with under stairs cupboard, cloakroom and the well planned kitchen with integrated fridge/freezer, dishwasher, oven and hob. The lounge has French doors leading in the garden which has gated access to the driveway and garage. There is driveway parking for 2 cars. The upstairs of the property consists of the family bathroom, the main bedroom with en-suite and a further double and single bedroom. Viewing is highly recommended.

### Location

Great Western Park in Didcot offers a modern living environment whilst being within close proximity to all of the town's central amenities. These include the Orchard shopping centre and Didcot Parkway station, with direct access to both A34 and Milton business park. The development now boasts primary and secondary schools, dentist, vets & Asda store and a selection of takeaway outlets, along with the Station Garden pub, and Boundary Park sports centre.



- Three bedroom detached property
- Easy access to Didcot town centre and Didcot Train Station
- Property is currently a rental property and is a great investment opportunity
- Main bedroom has en-suite
- Further double and single bedrooms
- Modern family bathroom
- Rear garden has gated access to the driveway parking and garage
- Property comes to the market chain free

3  bedrooms

1  receptions

2  bathrooms

Council tax band D

Tenure Freehold

EPC rating C



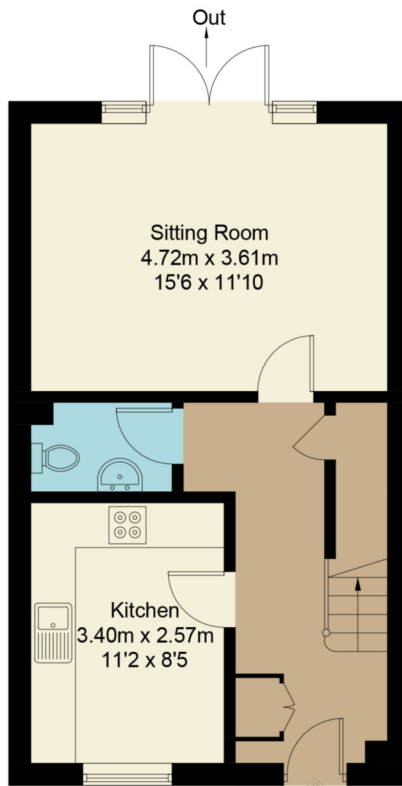
## Blackthorn Road, OX11

Approximate Gross Internal Area = 82.9 sq m / 892 sq ft

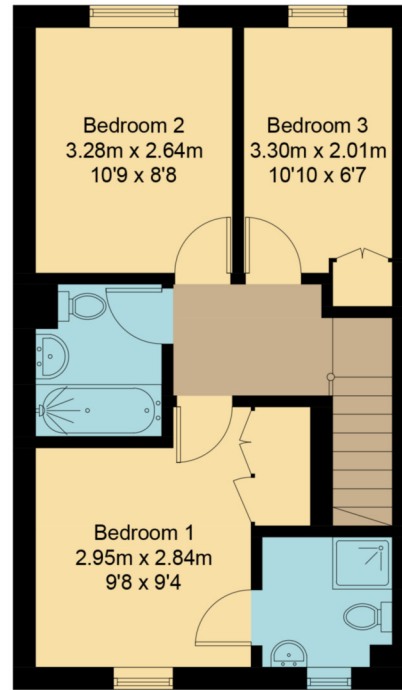
Garage = 21.4 sq m / 230 sq ft

Total = 104.3 sq m / 1122 sq ft

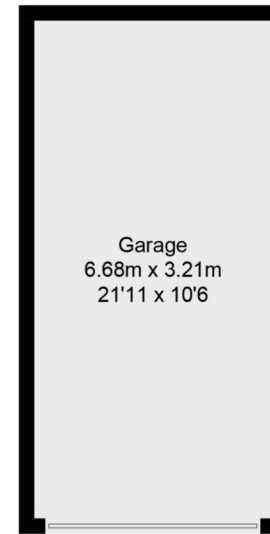
External Area = 153.8 sq m / 1655 sq ft



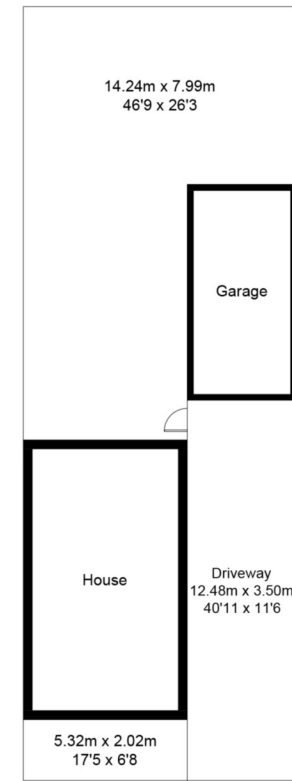
Ground Floor



First Floor



(Not Shown In Actual Location / Orientation)



Floor plan produced in accordance with RICS Property Measurement Standards.  
© Mortimer Photography. Produced for Hodsons.  
Unauthorised reproduction prohibited. (ID1034146)

